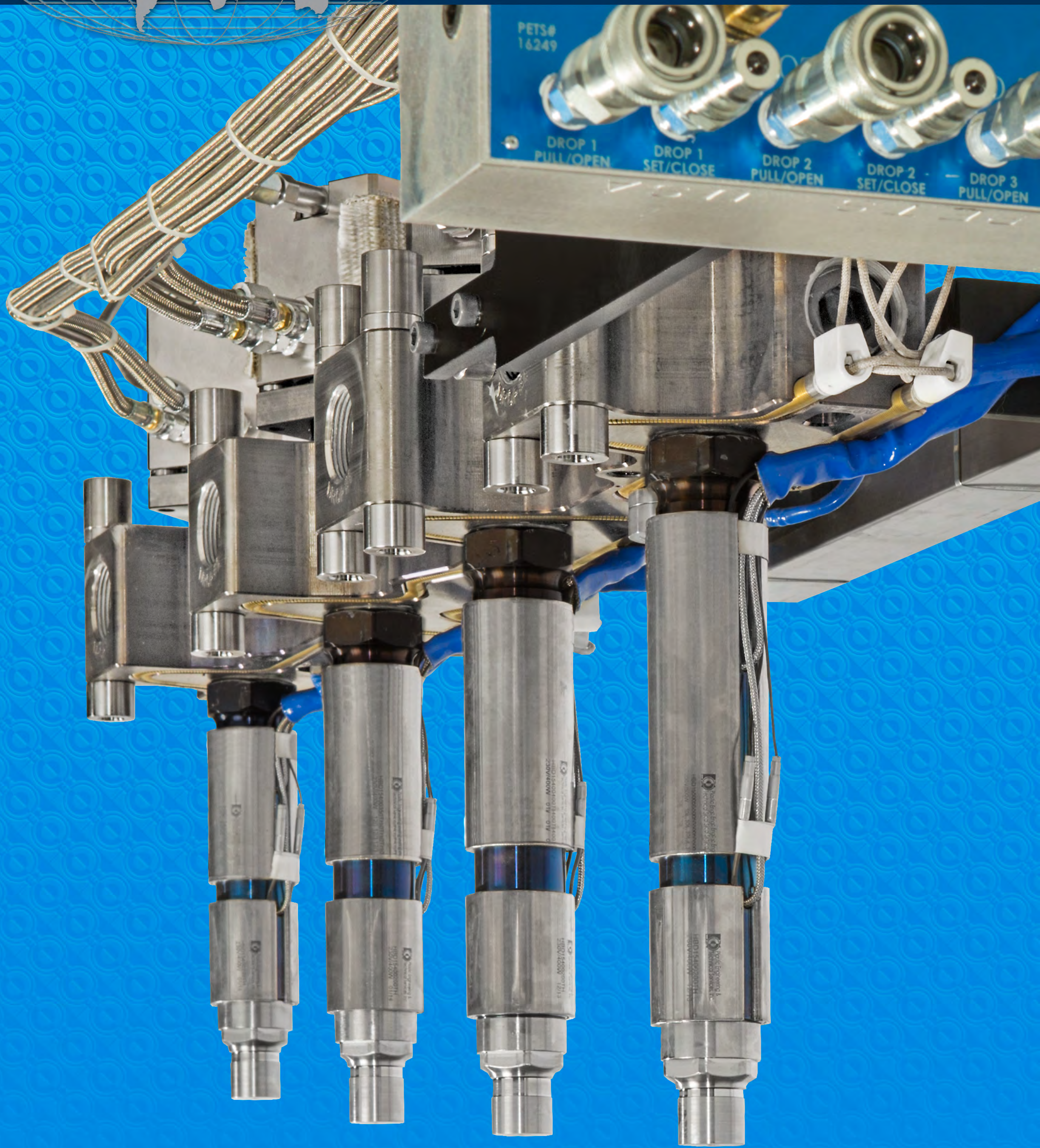




Plastic Engineering &
Technical Services, Inc.

The Plastics People with Innovative Solutions



EXPERT CERTIFIED Mold Filling Services

Once again Plastic Engineering & Technical Services (P.E.T.S.) is leading the industry.

Every mold design requires a separate mold filling analysis prior to manufacture to avoid costly mistakes and predict specifications between design and fabrication for plastic molding system implementation.

The PROBLEM: In most cases the analysis is done by a firm that does not manufacture hot runners. Consequently, the measurements are based on estimates of an incomplete design or based on previous dated designs that use older technology. They are just not as accurate as they need to be. This can lead to costly mistakes or a less efficient system than expected.

The SOLUTION: P.E.T.S. is one of only a very few hot runner manufactures in North America EXPERT CERTIFIED to perform your analysis on the actual design with all of its variables accounted for. Our analysis is not only more accurate, it's more likely to reveal both problems and improvements before manufacture begins. We will fine tune your system based on our EXPERT CERTIFIED analysis and we stand behind the results.

Once again P.E.T.S. is leading the industry.

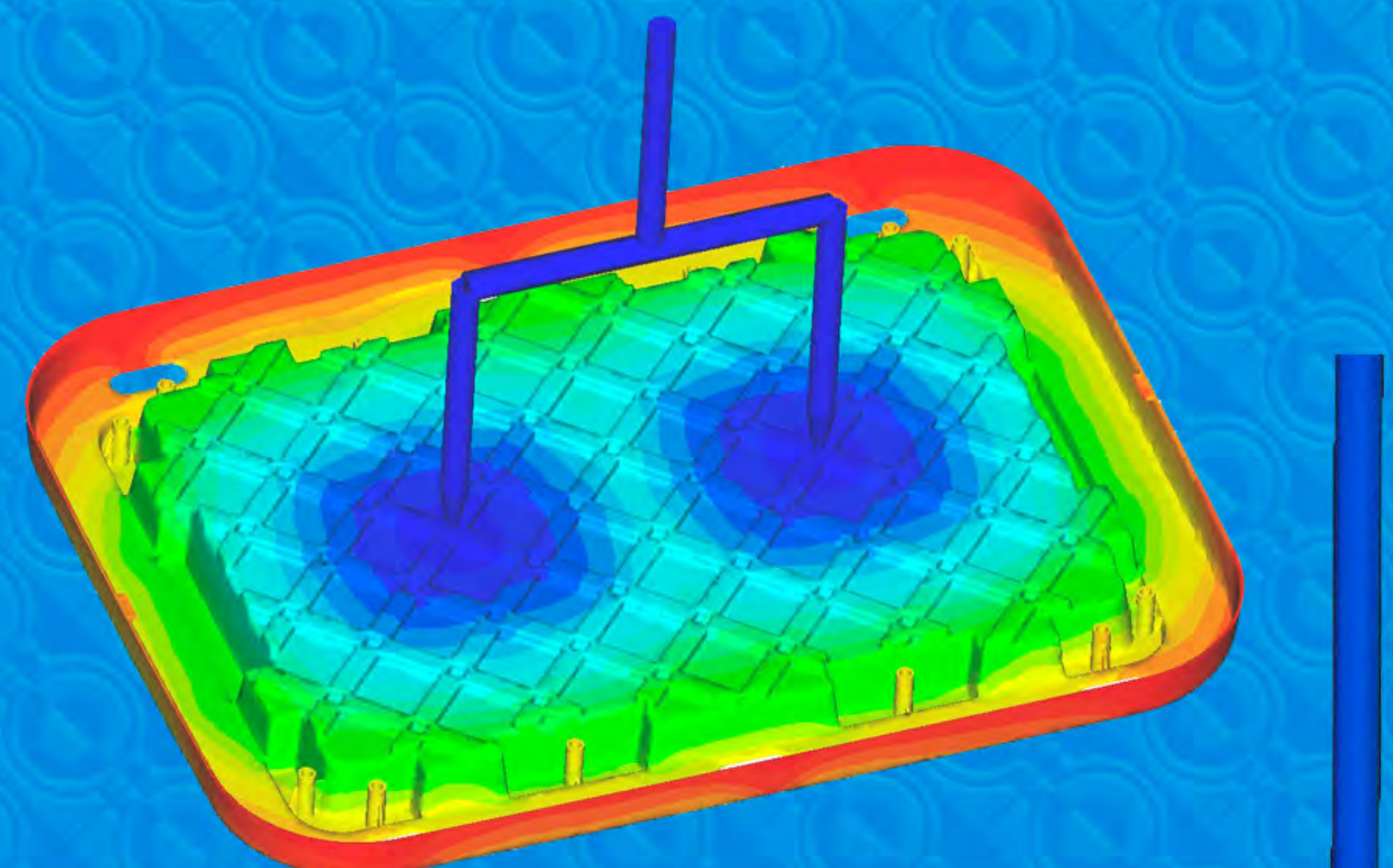
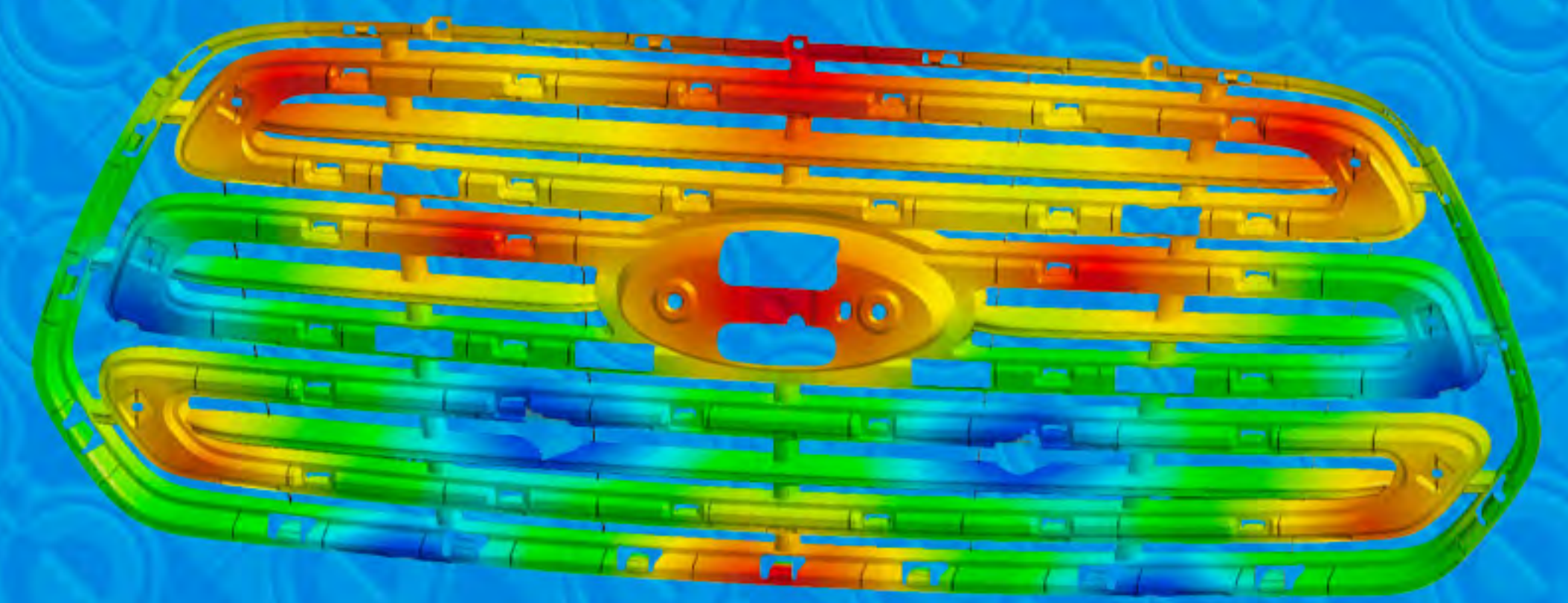
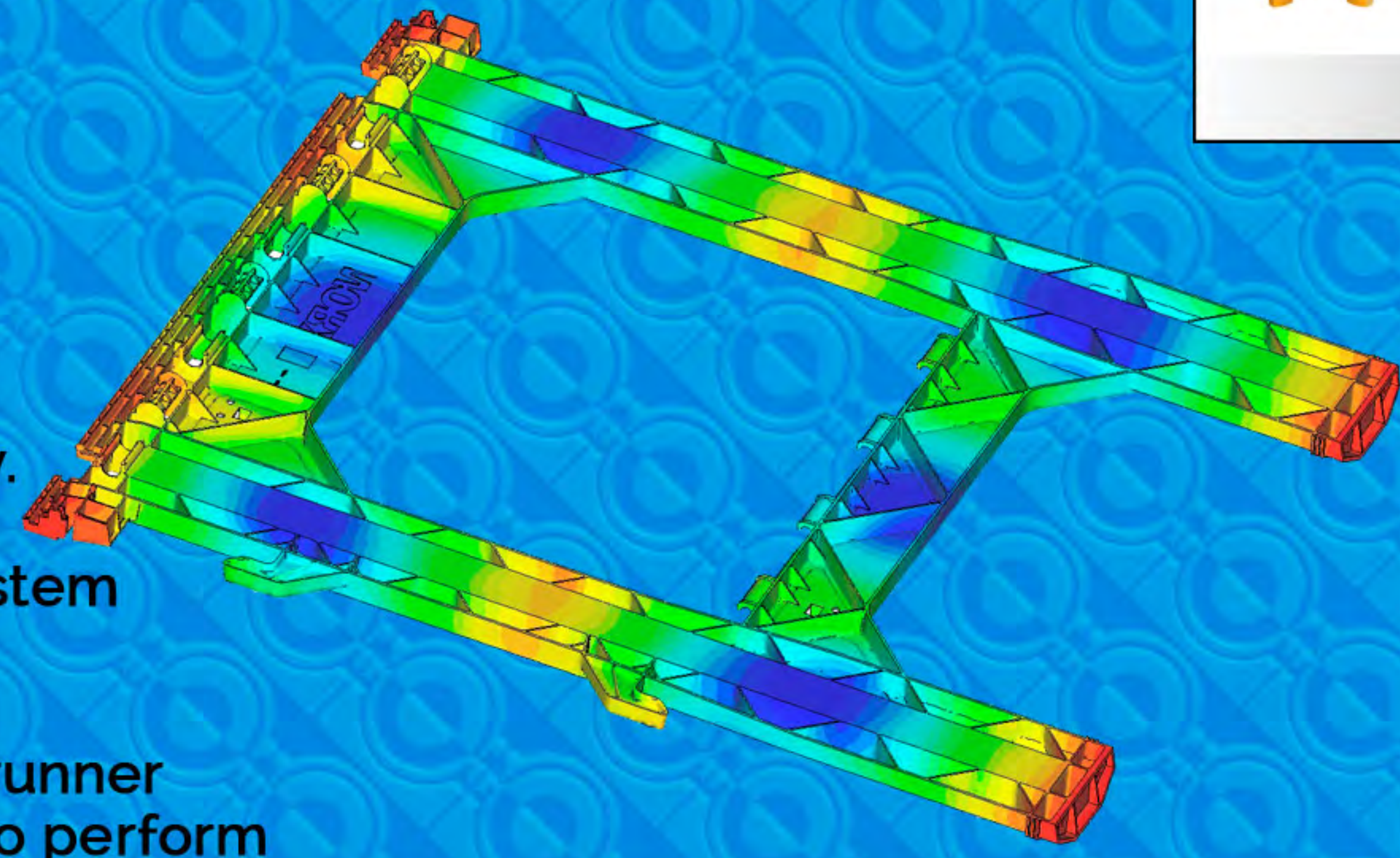
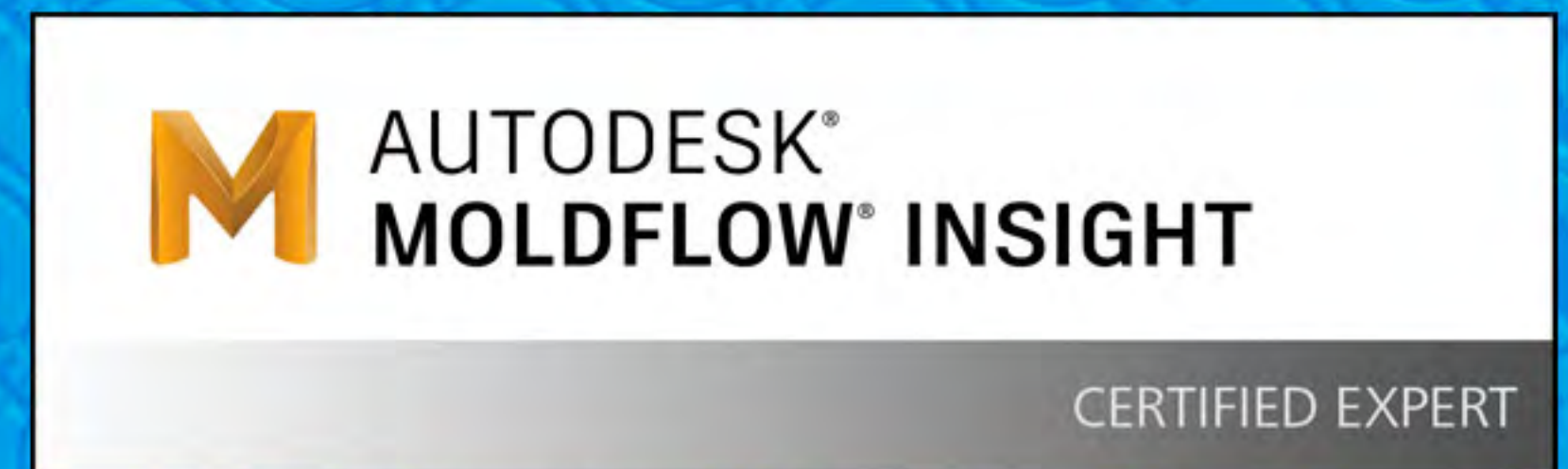
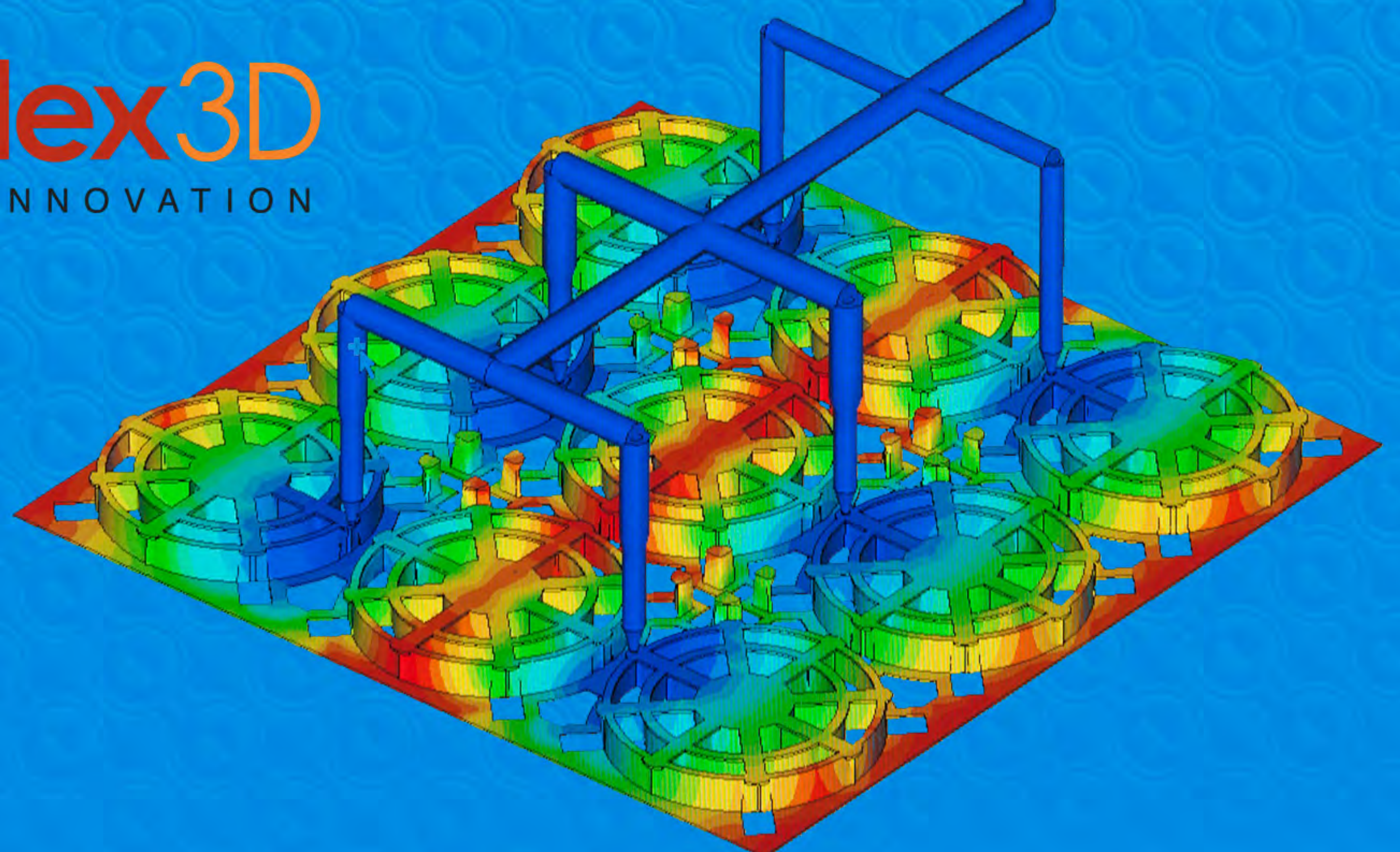
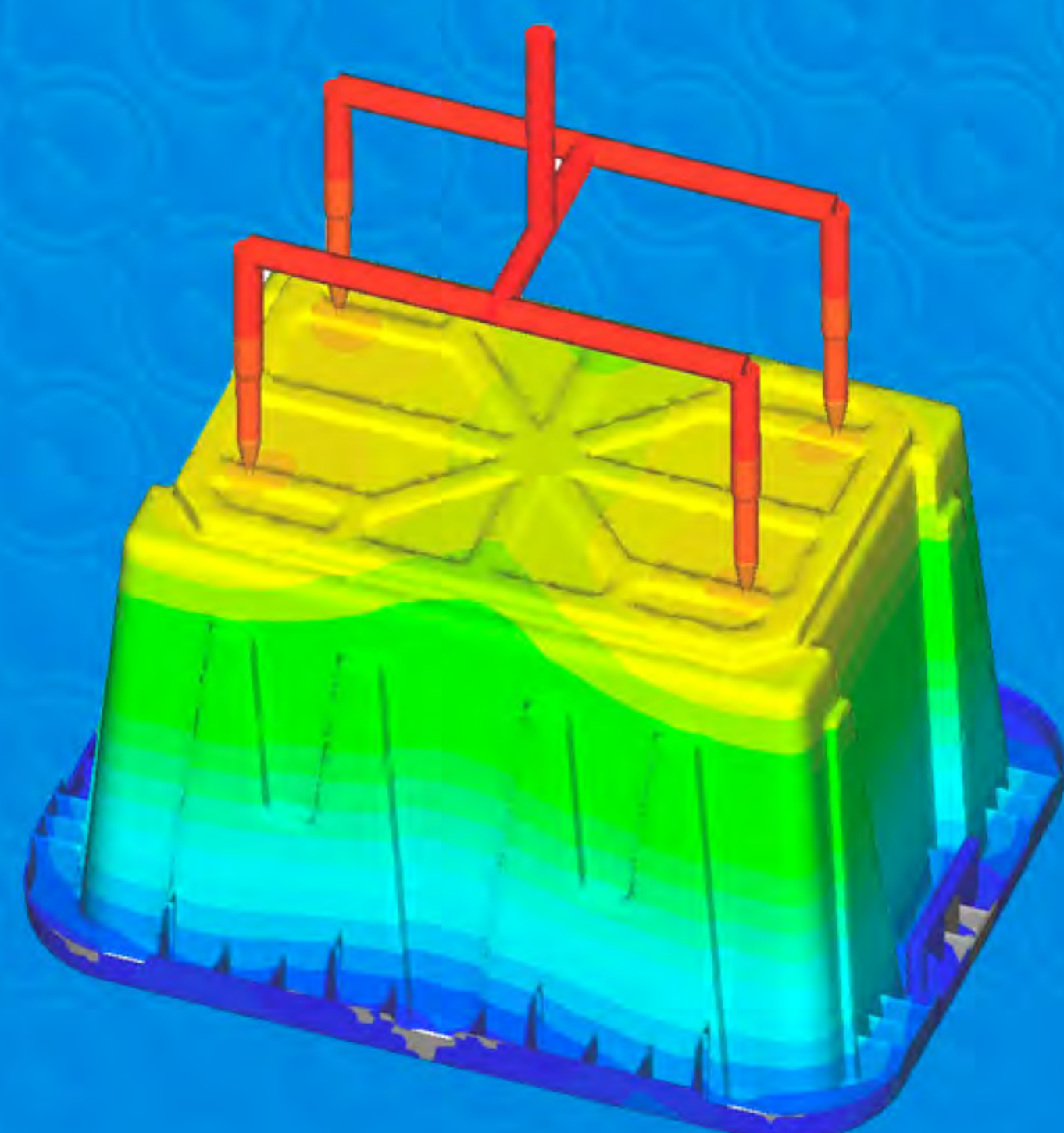
Starting today P.E.T.S. will include your choice of a full in-house EXPERT CERTIFIED MoldFlow® or Mox 3D based fill analysis for FREE, included with virtually all new hot runner systems.

No longer will you have to rely on third parties nor deal with the finger pointing when the analysis does not match the manufactured system delivered. We at P.E.T.S. go the distance and will even attend your onsite tryouts to verify our analysis.

This is an industry exclusive offer.

- Fill & Pack
- Cooling
- Warpage
- Co-injection
- Injection Compression
- Gas Assist
- Two Shot
- Core Back
- Mucell

Moldex3D
MOLDING INNOVATION



Free EXPERT CERTIFIED Mold Fill Analysis*



Plastic Engineering &
Technical Services, Inc.

NEW AND IMPROVED HOT RUNNER SYSTEMS!

PHRS I - Utilized for greater than 5 lb. shot size
and long glass or carbon fiber applications

PHRS II - Utilized for greater than 1 lb. shot size

PHRS III - Utilized for less than 1 lb. shot size

PHRS IV - Utilized for systems less than 0.5 lb. shot size

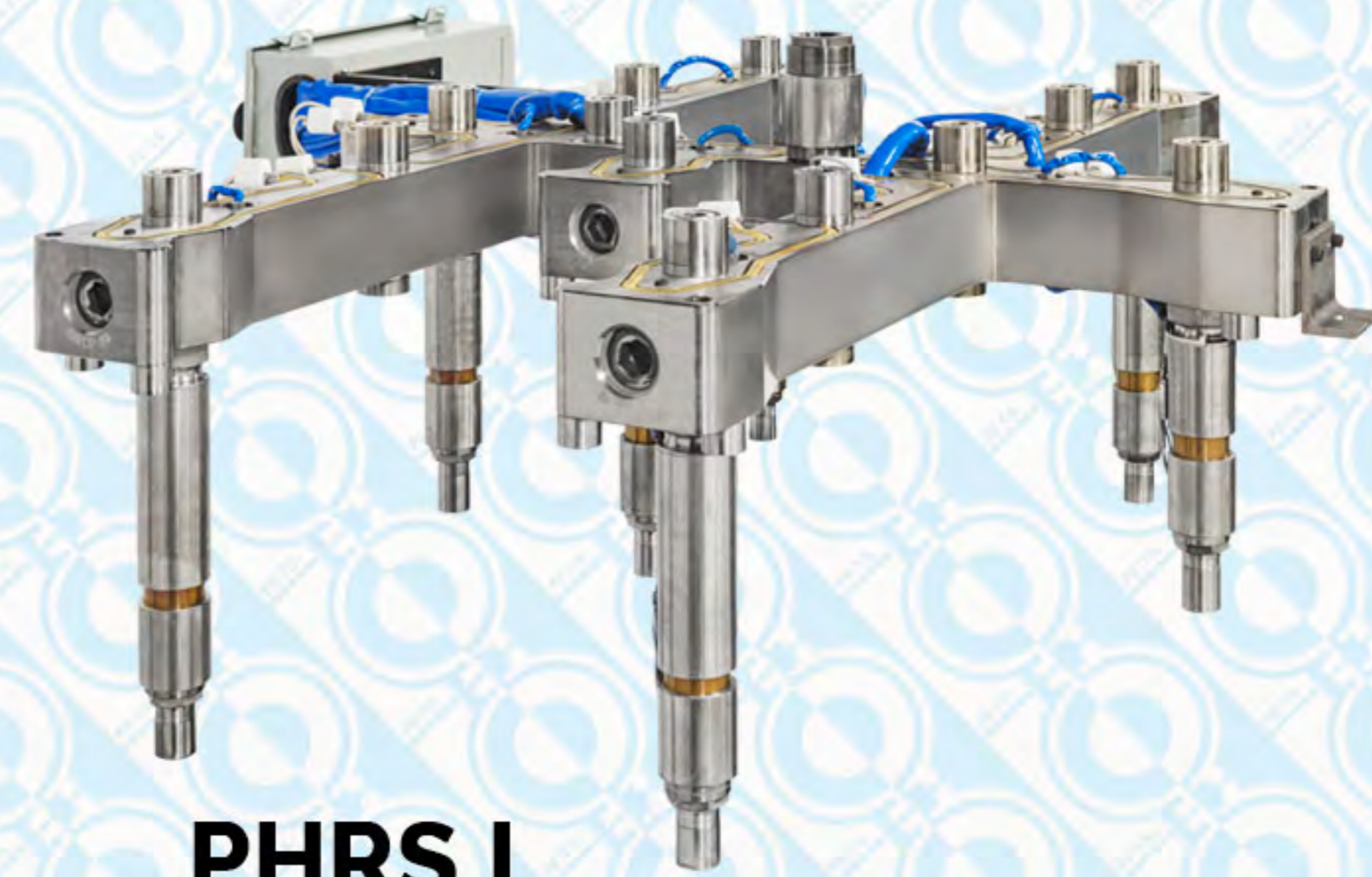
Hot Runner Systems:
Unitized
Pre-wired
Pre-plumbed
Screw-in drops
Slider style drops
Hot Half

HEATERS

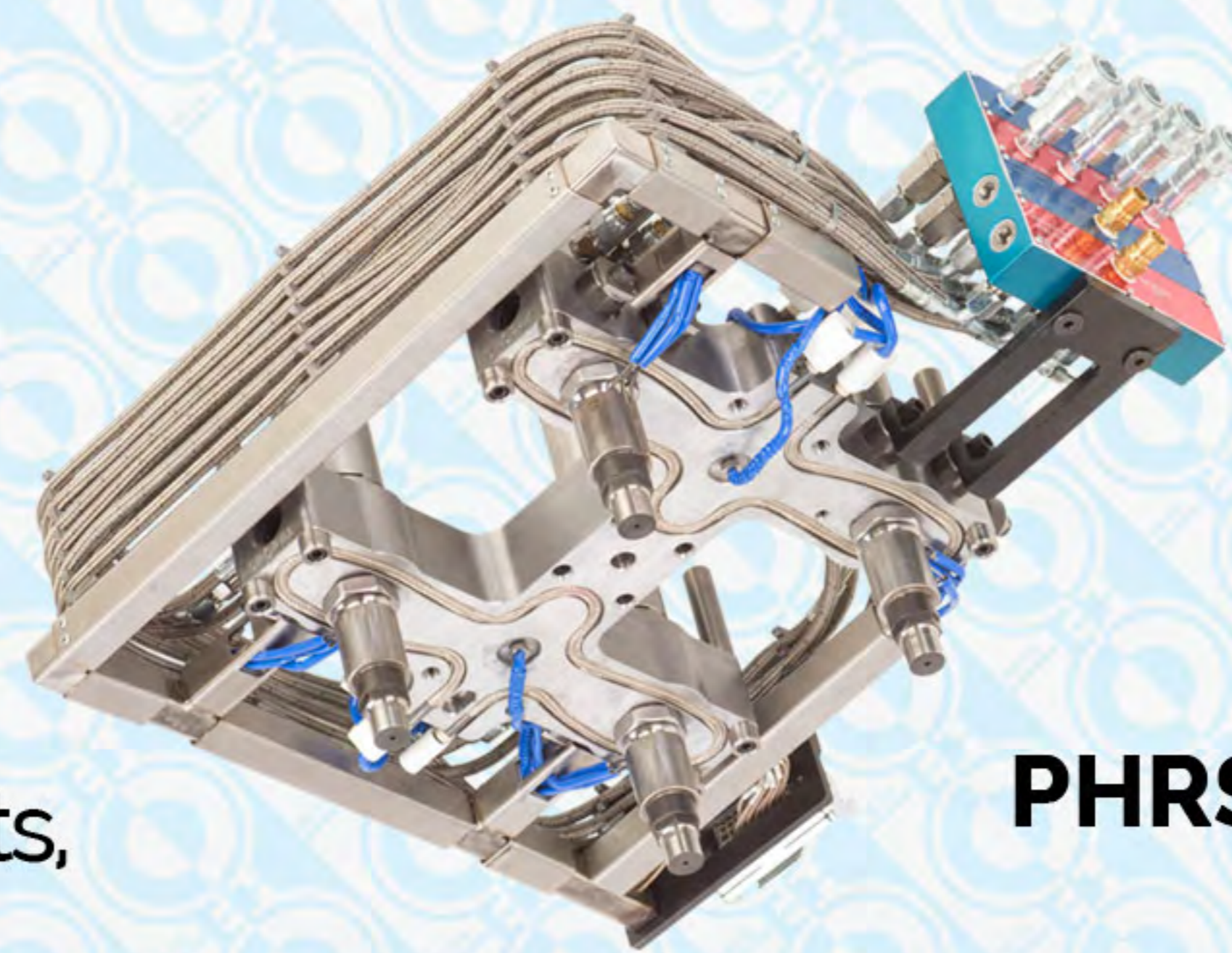
Our heaters have a 3 year warranty. These heaters are a tubular style heater that are housed inside spring loaded steel are self clamping. This allows for smaller drop pockets, which allows for better tool support. They are also laser welded to keep moisture out.

We also offer a fail safe heater option that is two heaters inside of one, so there is no need to pull the tool, you just go the electrical box to re-wire, which saves thousands of dollars in downtime for a minimal upfront cost!

Our manifold heaters are now flexible and come in one inch increments, you don't have to have pre-bent heaters in stock, and they can be used in other systems



PHRS I
Standard Unitized System



PHRS III

PHRS II
Hydraulic Valve Gate

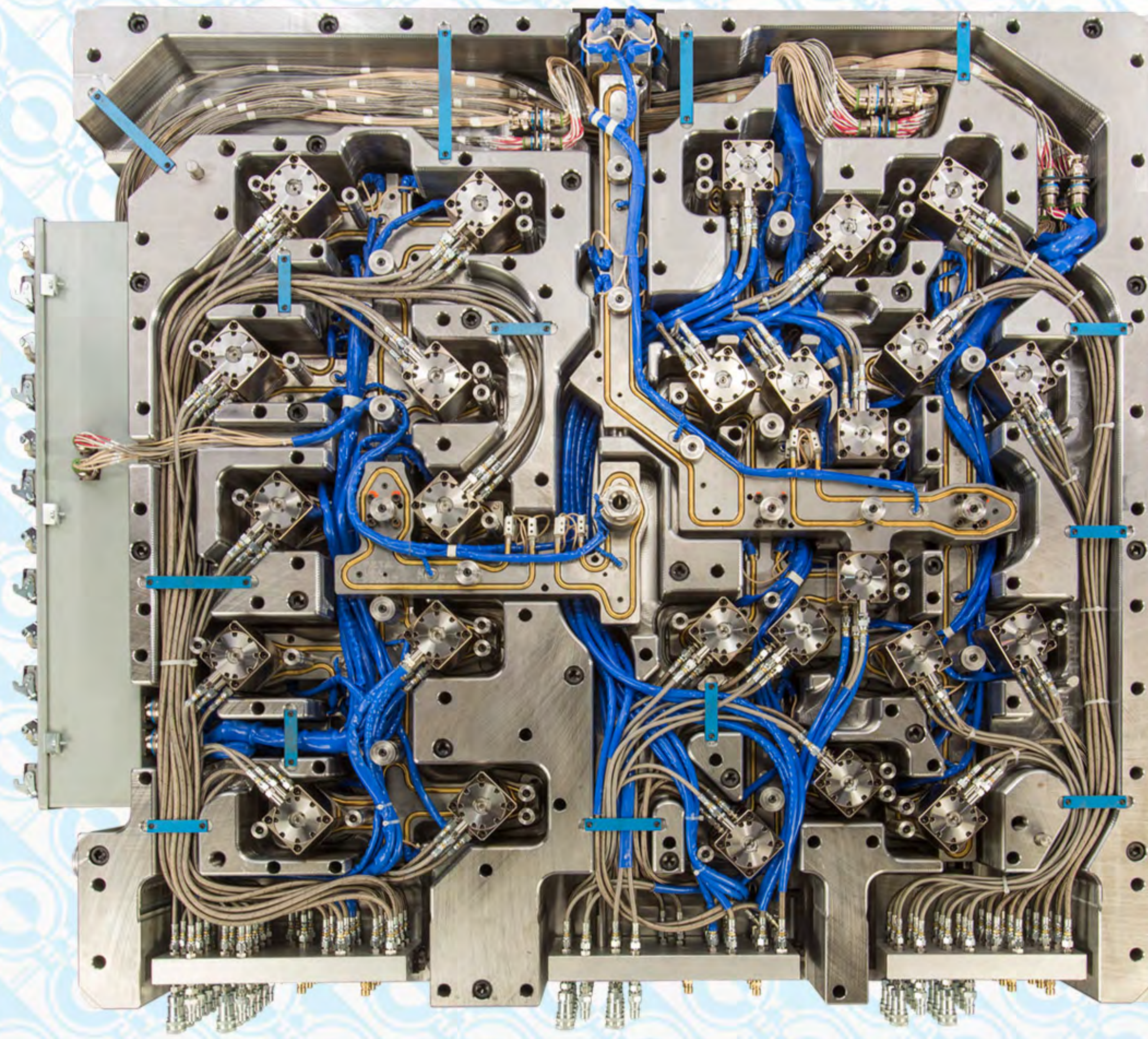


Industry Leading Hotrunner Systems

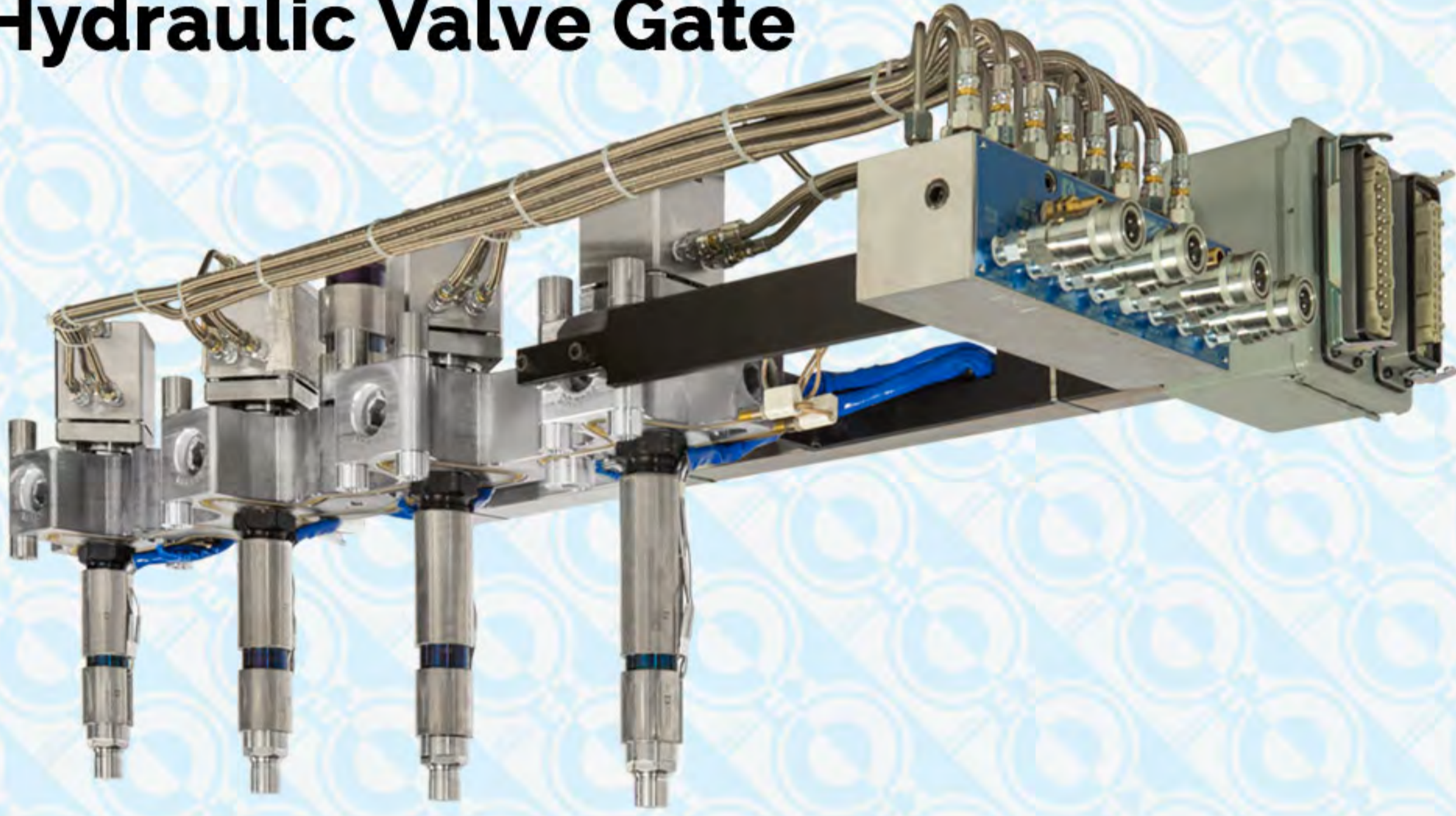
Hot Half Manifold Systems

Our Hot Half Manifold systems are a complete bolt-on assembly which is prewired and pre-plumbed ready to be set in place. Our design engineers focus on providing a user-friendly system with the end user in mind.

This fully integrated system allows you to bolt the system to the mold with not having to worry about properly installing the hot runner system.



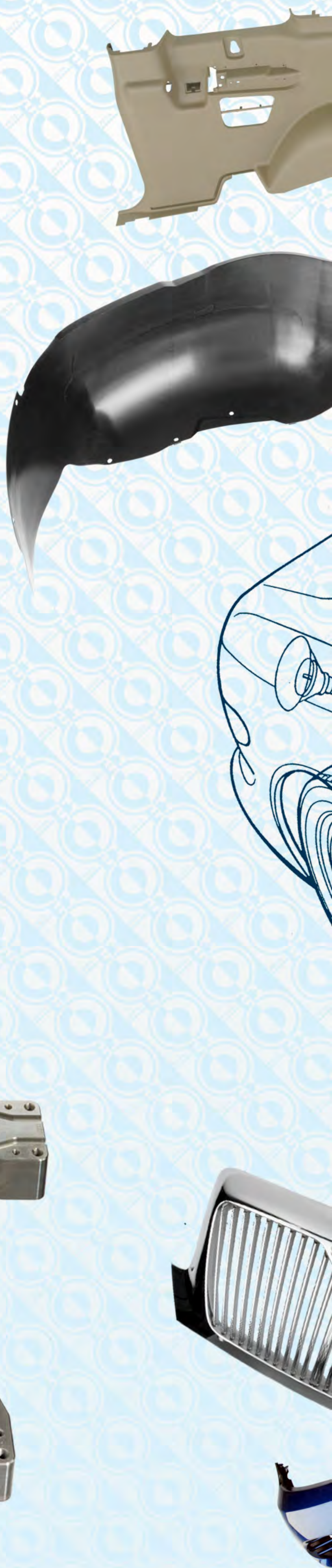
PHRS II Hydraulic Valve Gate

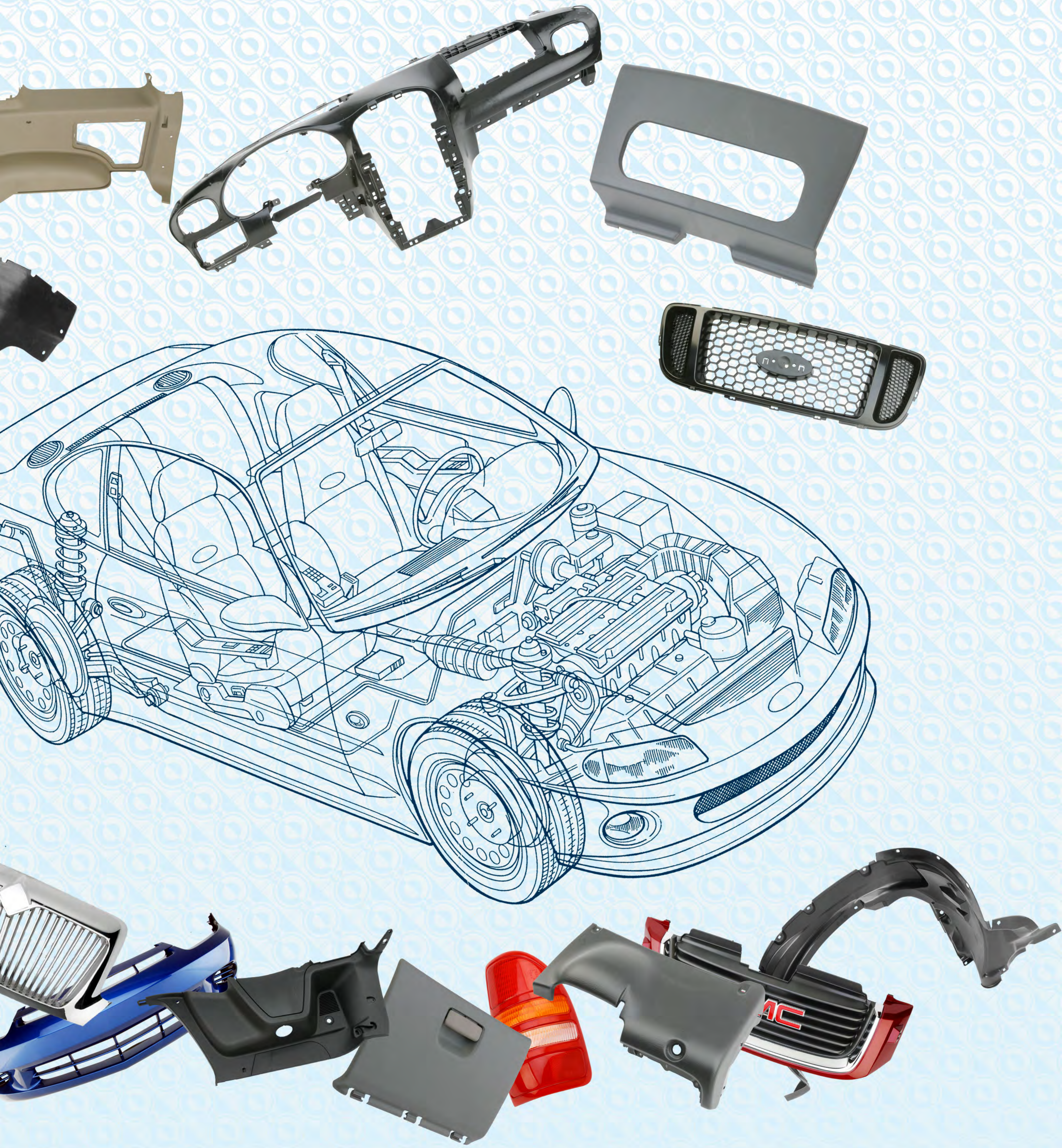


The manifold systems that we design and manufacture today are smaller with less mass which leads to faster start ups and utilizes less energy.

We manufacture unitized systems that are pre-wired, pre-plumbed and pre tested before they go to the tool shop. We also utilize and prefer to use screw-in drops whenever possible

Valve gate cylinders now sit on titanium standoffs to insulate them from the heat and have been redesigned as well. Our valve gated inserts, when used, are inside the drop and cap. The cap screws directly to the drop body and then is laser welded to have a leak proof design.





The Plastics People with Innovative Solutions

AUXILIARY EQUIPMENT

1. Variable Speed Hydraulic Sequencers
2. Hydraulic
3. Pneumatic
4. Combo unit (Hydraulic & Pneumatic)
5. **NEW! Smart Gate™ Valve Gate Sequencer**

see back cover of this brochure for more info



Temperature Controllers

CARD TYPE CONTROLLERS

- 20A per zone
- TC Reverse Detection
- Manual Mode Option
- Low Price!

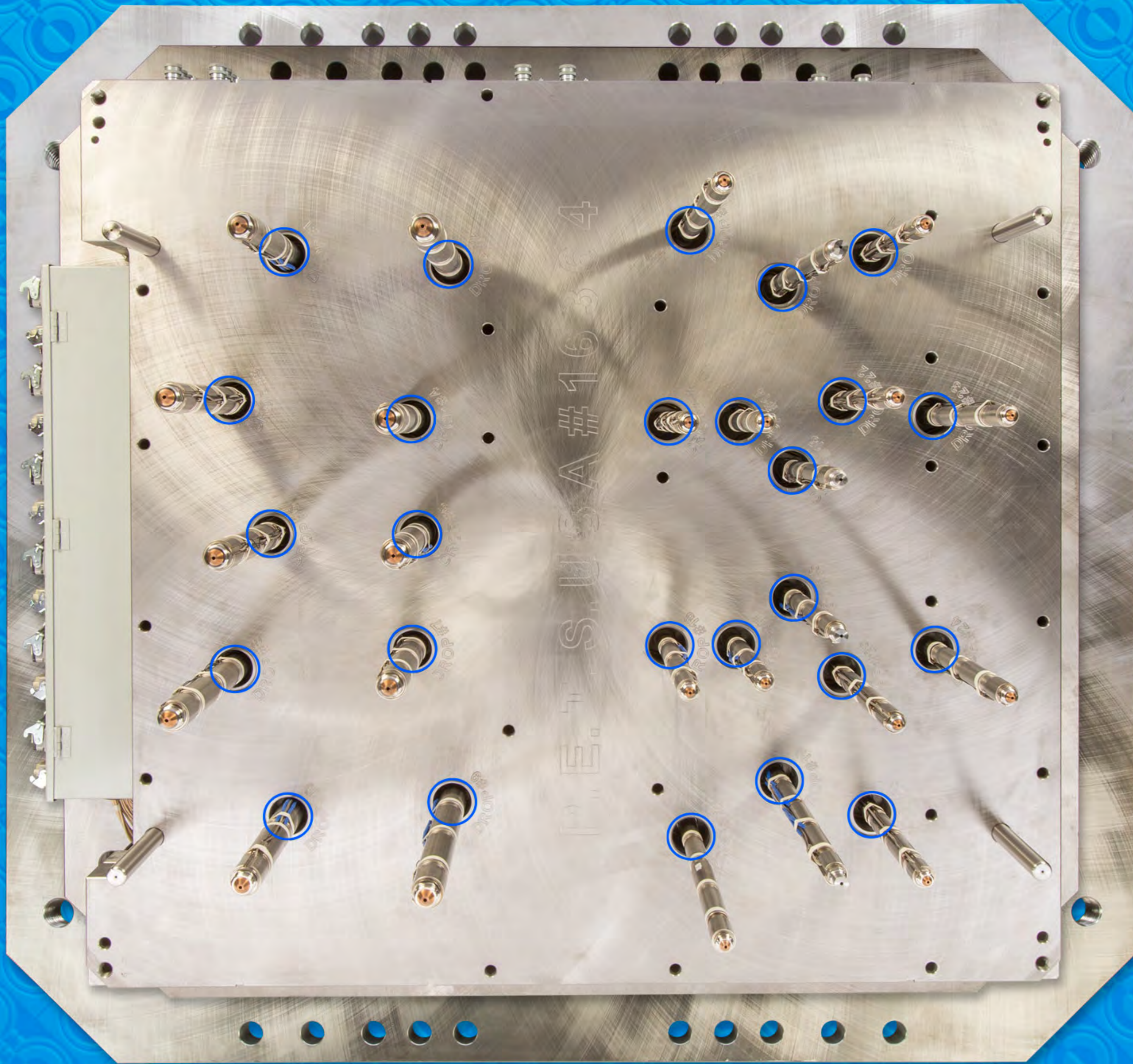
GUI TYPE CONTROLLERS

- All of Above, plus:
- 12-128 Zones

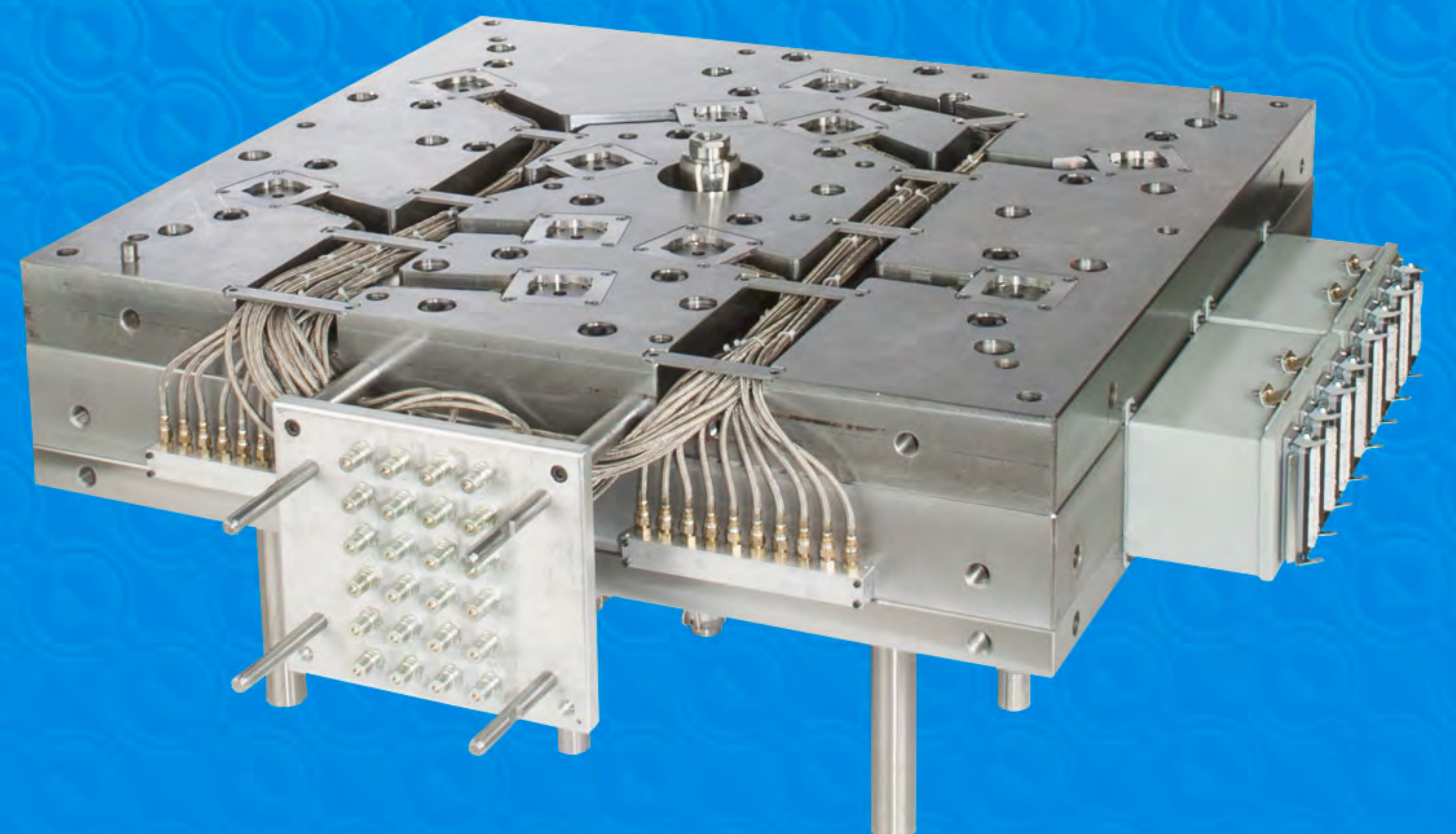
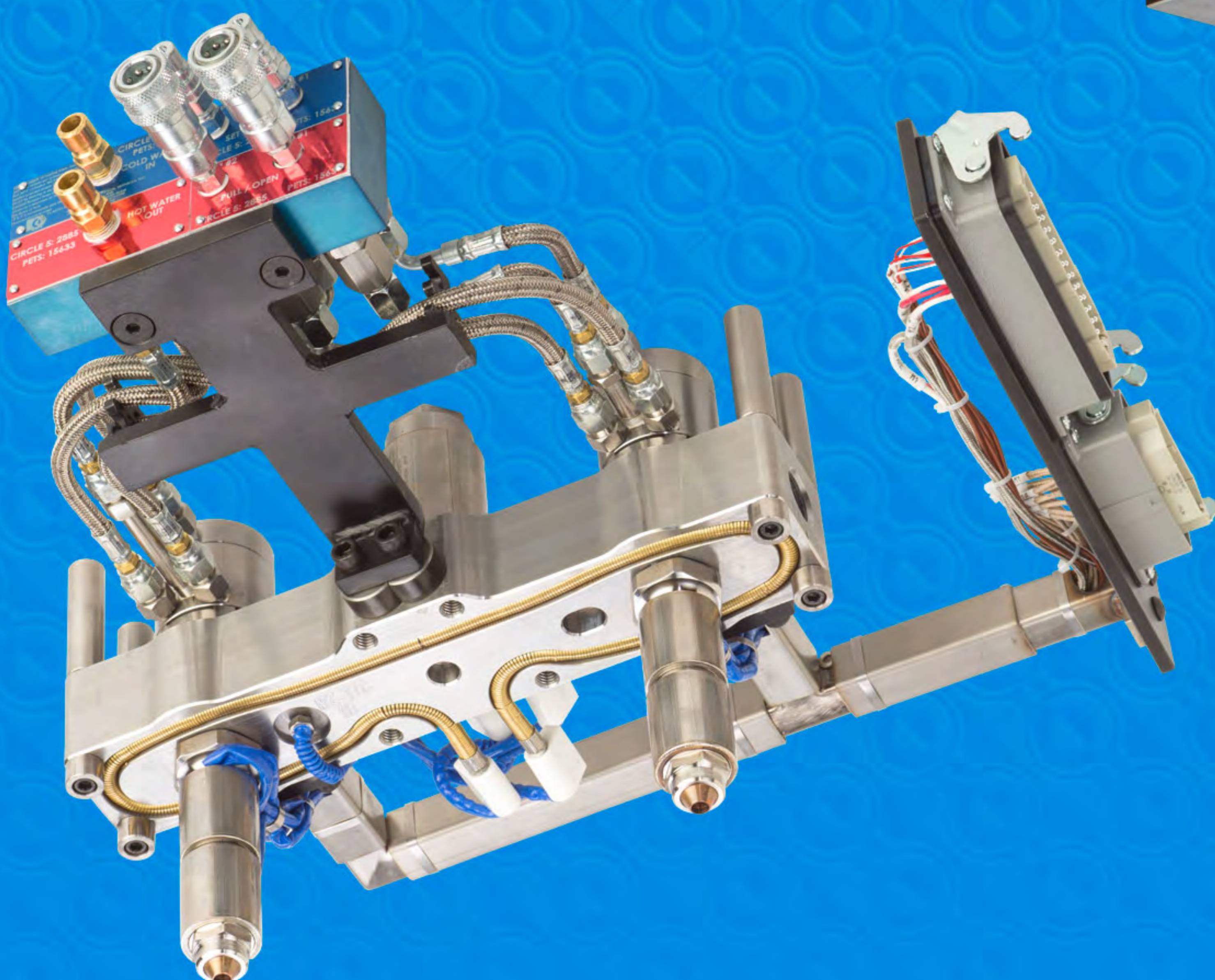
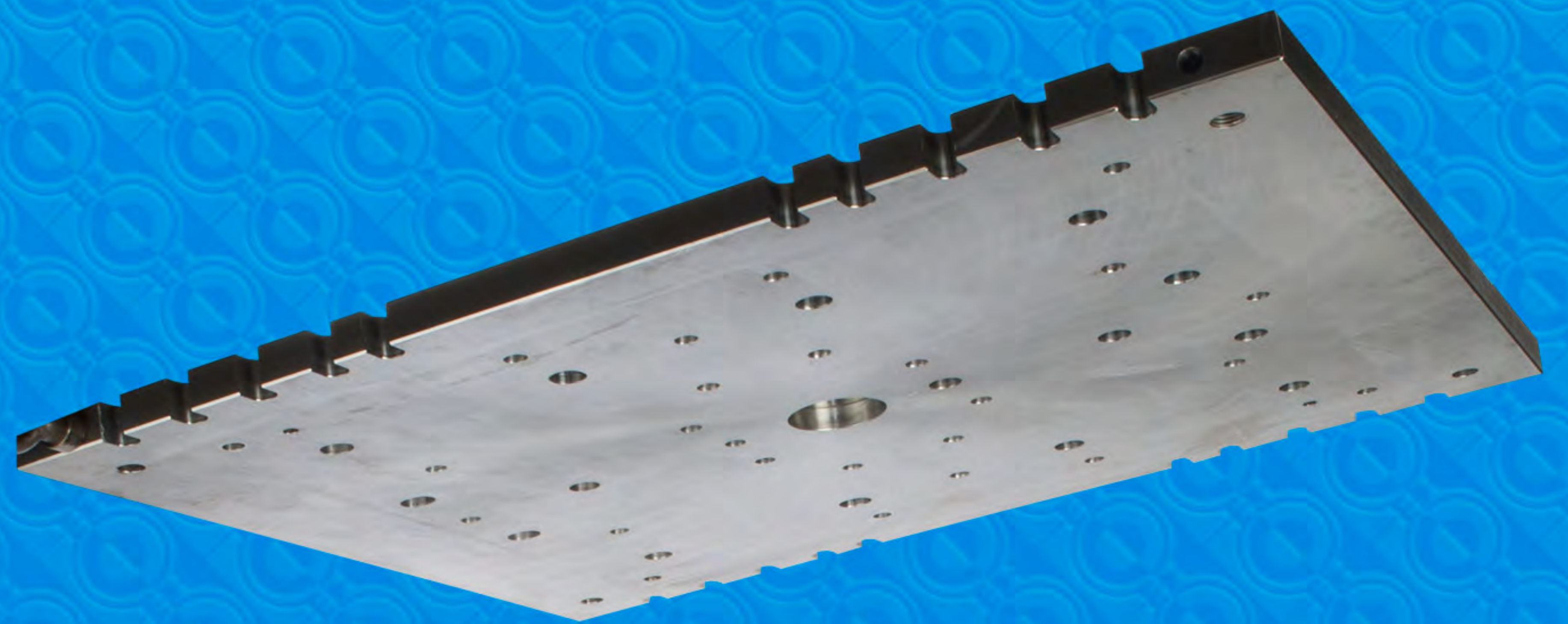
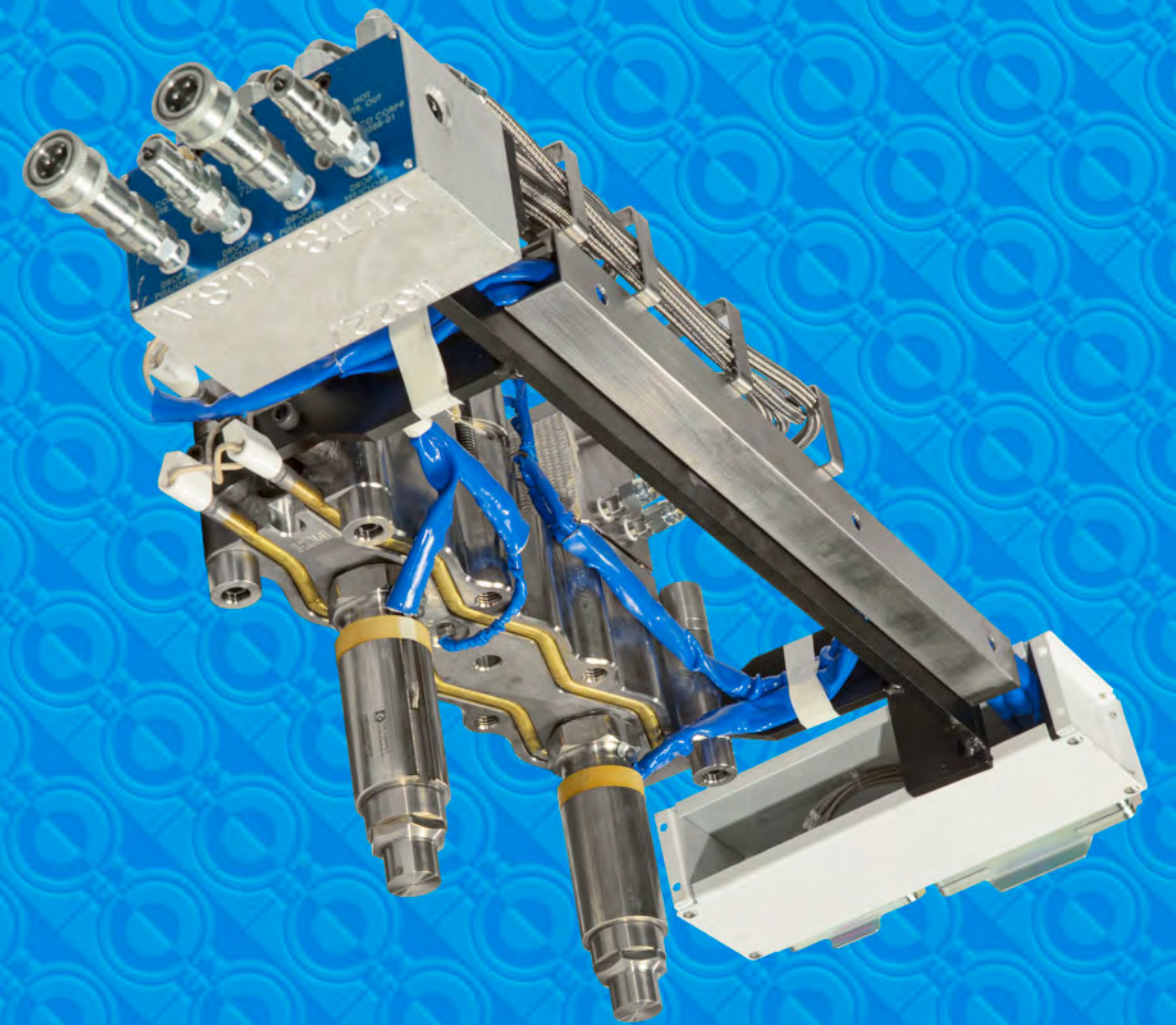


Temperature Control Systems

Industry Leading Hotrunner Systems



**26 Drop - Two Shot
Hot Half**



The Plastics People with Innovative Solutions



NEW! Smart Gate™ Valve Gate Sequencer

The Smart Gate™ Sequencer, exclusively from P.E.T.S. can be utilized with all manufactured hot runner systems.

With Smart Gate™ you can independently control each valve gate pin opening and closing with selectable speeds; reducing gate blush and shot hesitation, thus improving part quality while widening your process window. Smart Gate™ allows the molder to maintain ultimate control of the process via a touch screen controller.

The portability of the flow-control unit makes for a smart investment to help lower production cost without having to pay for the added controls on each hot runner system purchased up front.

#1	#2	#3	#4	#5	#6
FAST OPEN: 60 %	FAST OPEN: 80 %	FAST OPEN: 80 %	FAST OPEN: 100 %	FAST OPEN: 100 %	FAST OPEN: 100 %
CUSHION: 40 %	CUSHION: 20 %	CUSHION: 80 %	CUSHION: 100 %	CUSHION: 100 %	CUSHION: 100 %
CUSHION: 20 %	CUSHION: 20 %	CUSHION: 40 %	CUSHION: 100 %	CUSHION: 40 %	CUSHION: 100 %
FAST CLOSE: 100 %	FAST CLOSE: 40 %	FAST CLOSE: 80 %	FAST CLOSE: 100 %	FAST CLOSE: 100 %	FAST CLOSE: 100 %



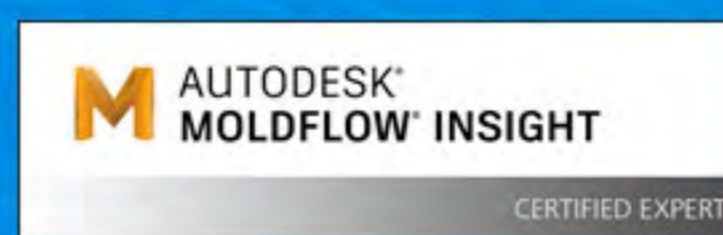
Plastic Engineering & Technical Services Inc. (P.E.T.S.)
4141 Luella Lane,
Auburn Hills, MI 48326
+1 248.373.0800
sales@petsinc.net
www.petsinc.net



P.E.T.S. Hotrunner (Shenzhen) Co. Ltd.
Shenzhen, China
帕滋热流道科技(深圳)有限公司
sales@petshotrunner.com
电话: (86) 0755-2910 9973

SERVICES

- Full Computer Aided Engineering & Analysis (CAE) with Expert MoldFlow™ certification and the only supplier in North America providing both Expert MoldFlow™ & Moldex3D™ Analysis.
- ACCELERATE™ Design; Accelerate™ Engineering System. The newest knowledge-based mold design software Accelerate™ Engineering System is real-time design reduces design time by 640 percent!
- Full technical support and service. Replacement parts and components.



PRODUCTS

- Hotrunner Manifolds
 - EvenFlow II™ Round Hot Runner Manifolds
 - Square Hot Runner Manifolds
 - Valve Gate Hot Runners
 - Hot Half Hot Runner Manifolds
 - Unitized Hotrunner Manifolds
- Valve Gate Sequencers
 - VG1000
 - VG1000HP
 - On-Board Sequencers
 - Smart Gate™
- Temperature Controllers
 - SSMC-12-60
 - SSMC-951
 - PHRS-HRTC-12
 - PHRS-GU-48

P.E.T.S. Europe Ltd
Unit 7, Beaver Industrial Estates
Southmoor Lane
Havant, Hampshire, P09 1JW
+44 (0) 23-9249-2411
sales@petsinc.net

P.E.T.S. Hotrunner (Mexico)
Bvd Luis D. Colosio 1979-2
Col. San Patricio
Saltillo Coah, Mexico
011 52 844 1808 1381
salesmx@petsinc.net

P.E.T.S. Hong Kong
P.E.T.S. International Systems
Unit 505
Wing On House
71 Des Voeux Rd. Central,
HK